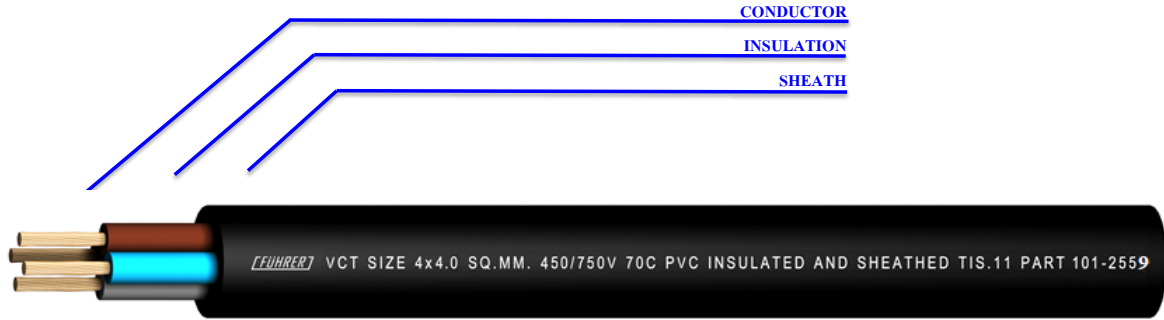


450/750 V 70°C PVC INSULATED AND SHEATHED



CONDUCTOR :	Flexible stranded annealed copper wire Size 1.0 mm ² up to Size 35 mm ²	CLASSIFICATION:	Maximum conductor temperature 70°C Circuit voltage not exceeding 750 volt
INSULATION :	Polyvinyl chloride (PVC) Light Blue , Brown , Black , Grey	TESTING VOLTAGE:	2,500 VAC
SHEATH :	Polyvinyl chloride (PVC) Black colour	REFERENCE STANDARD:	TIS.11 PART 101-2559

Nominal Cross Sectional area (mm ²)	Conductor		thickness of Insulation (mm)	thickness of Sheath (mm)	Overall Diameter	Maximum continuous current rating in free air (A)	Minimum insulation resistance at 70°C (MΩ-Km)	cable weight (approx.) Kg/Km	standard length (m)
	Diameter of wires (Max.)	Diameter (mm) (Approx.)							
1	0.21	1.31	0.8	1.6	12.0	10	0.0127	170	100/C
1.5	0.26	1.58	0.8	1.6	12.5	16.0	0.0111	200.0	100/C
2.5	0.26	2.04	0.8	1.6	15.0	20.0	0.0092	260.0	100/C
4	0.31	2.59	0.9	1.8	17.0	26.0	0.0084	363.0	100/C
6	0.31	3.60	0.9	2.0	19.5	34.0	0.0071	540.0	100/C
10	0.41	4.79	1.1	2.2	24.0	47.0	0.0068	860.0	500/D
16	0.41	5.88	1.1	2.6	28.0	63	0.0050	1220	500/D
25	0.41	7.32	1.3	2.8	33.0	83	0.0048	1800	500/D
35	0.41	8.61	1.3	3.1	37.0	102	0.0041	2380	500/D

C:Packing in coil.